



Department
for Work &
Pensions

Greater Manchester District Jobcentre Plus

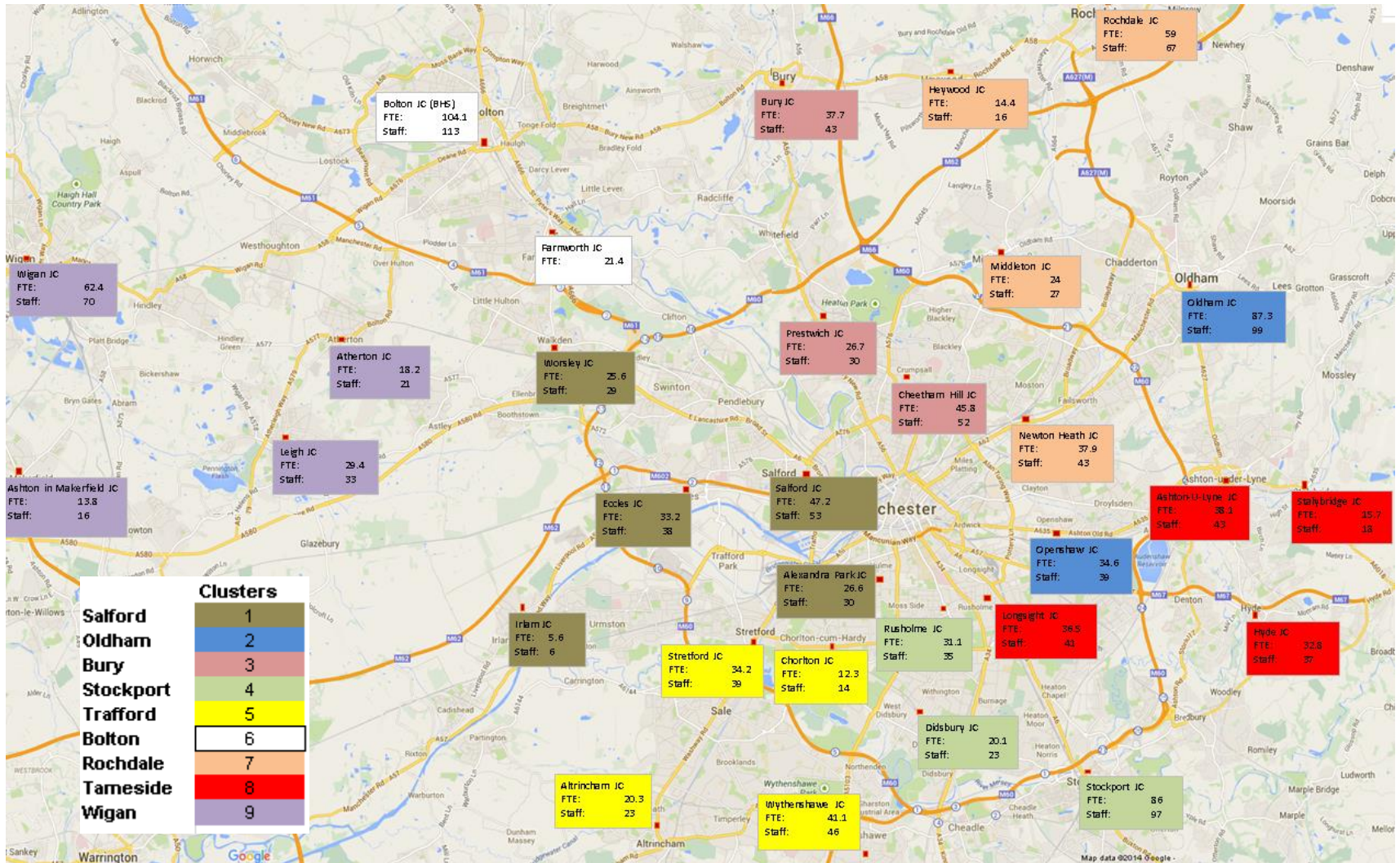
Julie Price

Senior External Relations Manager

Greater Manchester District

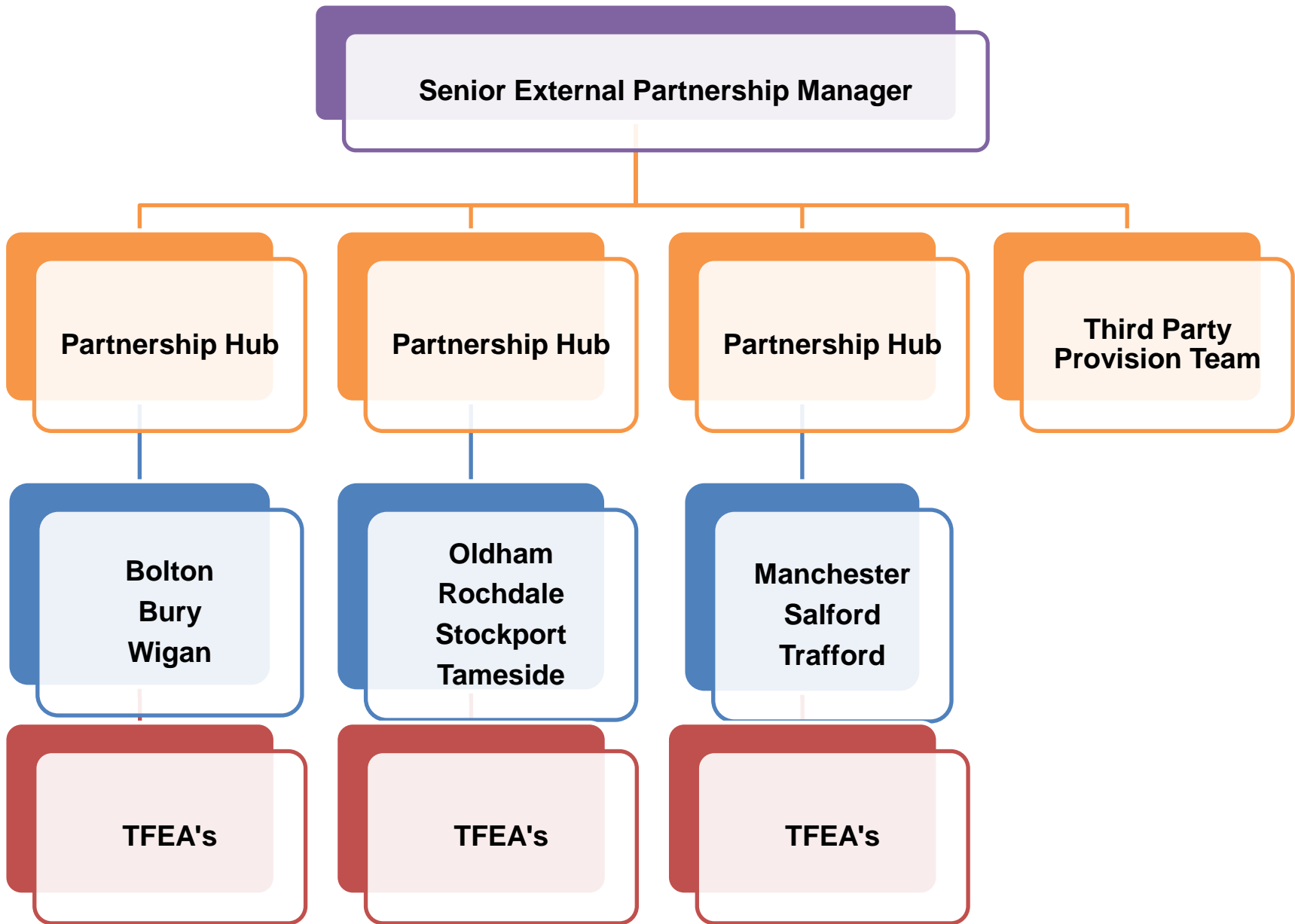
Greater Manchester District

Clusters – The new cluster configuration



Rationale for one GM District

- To be more efficient, reduce duplication, enhance the customer experience to deliver improved outcomes.
- To develop one way of working to better meet the expectations of the Greater Manchester Devolution Agreement
- To drive greater quality and consistency across the Greater Manchester Jobcentre network
- To design and deliver new ways to support people with difficult and complex lives



• DWP PRIORITIES / WORK STREAMS

- Disability Employment Gap
- Towards Full Employment
- Support For Schools
- Employer Campaigns

